



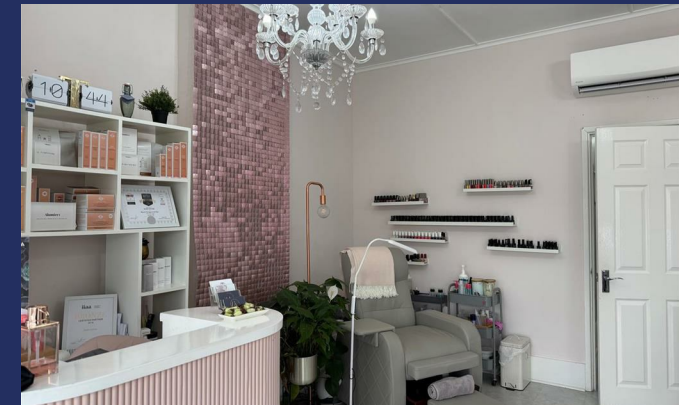
210 High Street
Hornchurch
Essex
RM12 6QP

For Sale - High Street Investment Opportunity

- Retail Unit of 545 sqft (51 sqm)
- High Street Location
- Producing £16,540 per year

01277 289150

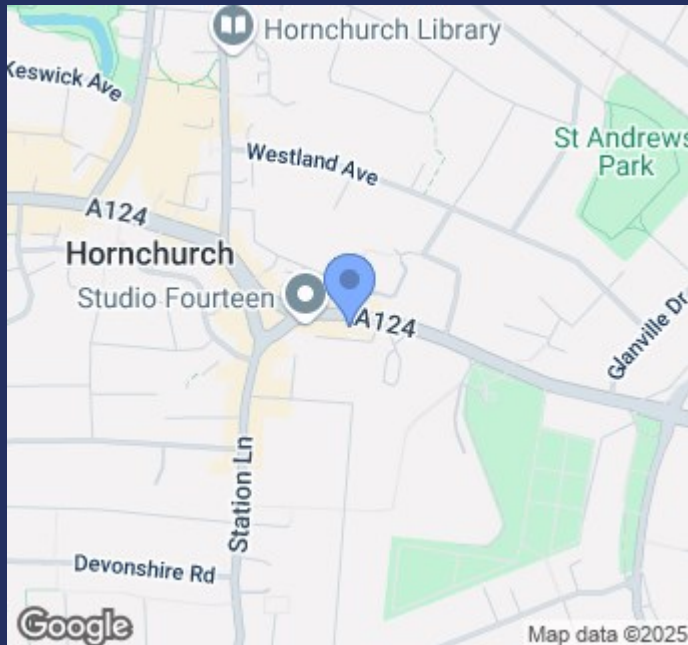
www.mjmpropertyconsultants.co.uk



Description

The property comprises a ground floor retail unit, with a flat on the first and second floor. The retail unit is currently used as a beauty salon. The first floor of the flat hosts a kitchen and lounge/diner, with the bedrooms located on the second floor above.

There is rear access to the ground floor, and space to park one vehicle.



Accommodation

210 - Ground Floor Retail Unit - 545 sqft (51 sqm)

210a - Two Bedroom flat

Tenancies

The ground floor is let to the beauty salon on a three year lease from 1st April 2025 at a rent of £16,440.00 per year.

The flat is sold on a one hundred and twenty five year lease producing a ground rent of £100 pa.

Terms

The property is offered freehold subject to the above tenancies.

Price

Upon Application

Energy Performance Certificate

210 - C68

210a - D66

Rateable Value

210 - £11,500

210a - Band C

Legal Costs

Each party to bear their own legal costs.

Further Information and Viewing

Viewing & Further Information:

Contact MJM Property Consultants

Mark Mannering

mark@mjmpropertyconsultants.co.uk

01277 289 150

Viewing & Further Information:

Contact MJM Property Consultants:

Mark Mannering

mark@mjmpropertyconsultants.co.uk

07896 768002